

## Picture of the Month

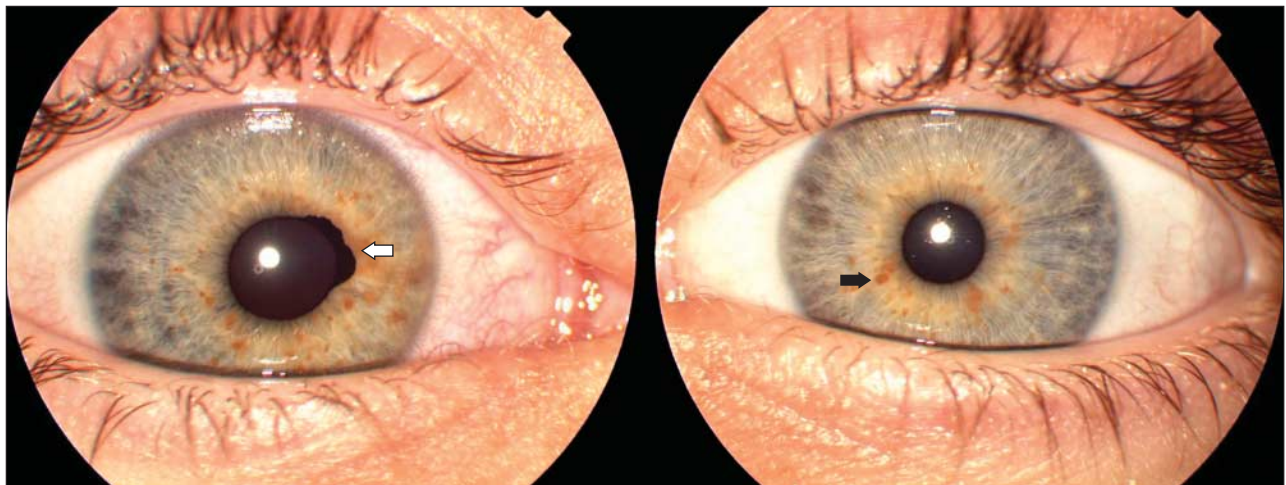
Robert A. Avery, DO; Grant T. Liu, MD

**A** 9-YEAR-OLD BOY PRESENTED FOR OPHTHALMOLOGIC evaluation. His medical history included chemotherapy for a juvenile pilocytic astrocytoma of the optic chiasm. He had also been diagnosed with attention-deficit/hyperactivity disorder.

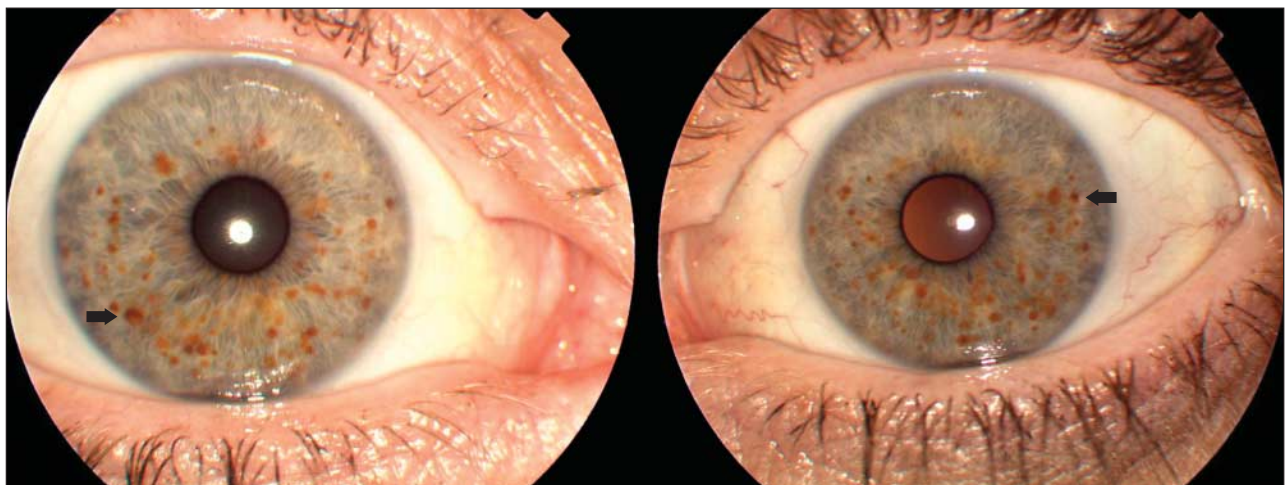
On examination, his visual acuity when wearing glasses was 20/20 in both eyes. Results of color vision testing were normal for each eye. Slitlamp examination revealed elevated pigmented lesions on the irides of both eyes and a misshapen pupil in the right eye (**Figure 1**). Slitlamp examination of the patient's mother revealed similar findings (**Figure 2**). Most of the iris lesions in the patient and his mother were located in the inferior portion of the iris.

**Author Affiliations:** Division of Neurology (Dr Avery), and the Neuro-Ophthalmology Service (Drs Avery and Liu), Children's Hospital of Philadelphia; and the Department of Biostatistics and Epidemiology (Dr Avery), University of Pennsylvania School of Medicine, Philadelphia.

See <http://www.archpediatrics.org> for the Picture of the Month Web Quiz: What is your diagnosis?



**Figure 1.** Misshapen pupil of right eye (white arrow) and elevated pigmented lesions of the iris (black arrow).



**Figure 2.** Elevated pigmented lesions of the iris in the mother's eyes (black arrows).